

**Goal:**

This feature will allow you to replicate open and locked files, including databases.

**Preparation:**

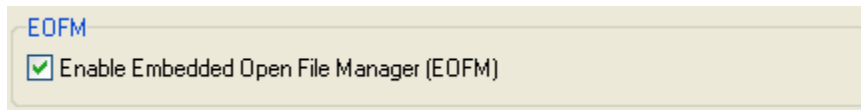
Setup your PeerSync Job with your Source/Target Folder and basic settings.

**Requirements:**

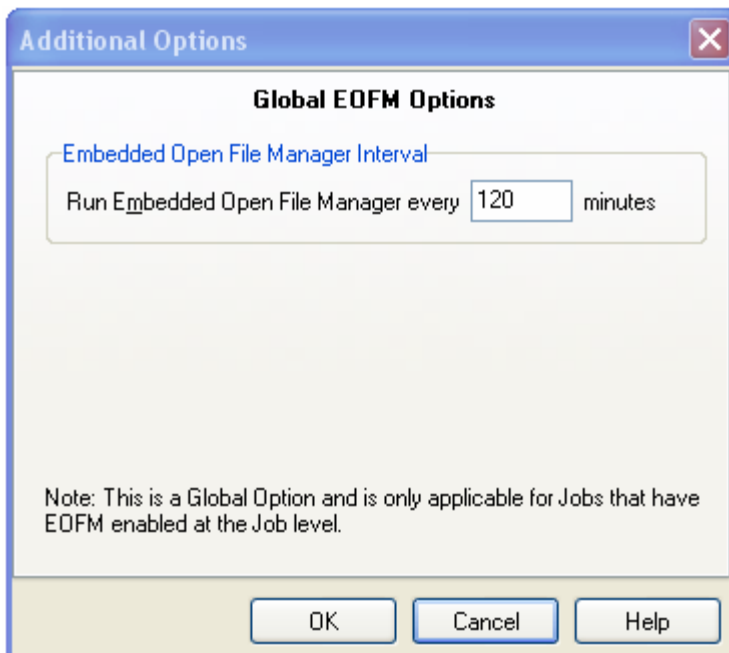
The EOFM option can only be enabled for Jobs where the Source Folder is located on a local disk relative to where PeerSync is installed. The Target Folder can point to any location.

---

1. Change the drop-down list in the top left from **Basic** to **Advanced**.
2. Select the **EOFM** option from the menu tree.
3. Check the **Enable Embedded Open File Manger (EOFM)** option.



4. Now click on **Global Settings** on the bottom of the pane.
5. Change the value of **Run Embedded Open File Manager every X minutes** to specify how often the Embedded Open File Manager will copy open and locked files. The minimum time is every 30 minutes.



6. Save the Profile and run synchronization.

## Understanding Embedded Open File Manager behavior during Scan at Start

---

When a Profile has the **Scan Job once at Start** option checked in the **Automation** window, the Embedded Open File Manager (EOFM) will process the files that are in-use at the end of the full scan. During the scan, the log may get messages such as:

*"Could not open Source File (Added to EOFM Locked List)"*

This is not an error. This message means that the file could not be copied using the standard copy method, and instead will wait for the EOFM to run in order to be replicated to the destination. When the EOFM runs at the conclusion of the *Scan Job once at Start* event, the log should then reflect that these files have in fact been processed:

*"EOFM initialized C Drive successfully"*

## Understanding Embedded Open File Manager behavior in Scheduled Modes

---

The Embedded Open File Manager (EOFM) runs on an interval independent of Job schedules, as defined in the **File Options** -> **Open Files** -> **Global Settings** window.



This means that at the end of a scan, messages may appear in the log file stating:

*"Could not open source file (Added to EOFM Locked List)"*

This is not an error. This message means that the file could not be copied using the standard copy method during the scheduled scan, and instead will wait for the EOFM to run at its defined interval in order to be replicated to the destination. When the EOFM runs, the log should then reflect that these files have in fact been processed:

*"EOFM initialized C Drive successfully"*

## **Understanding Embedded Open File Manager behavior in Real-Time Mode**

---

The Embedded Open File Manager (EOFM) runs on an interval independent of Real-Time activity. If a Real-Time event is detected, PeerSync will attempt to copy the file immediately using the standard copy method. If this fails because the Source File is locked for an extended period of time, it will add it to the locked list to be processed by the EOFM. The following message will appear:

*"Could not open source file (Added to EOFM Locked List)"*

This is not an error. This message means that the file could not be copied using the standard copy method, and instead will wait for the EOFM to run at the specified interval in order to be replicated to the destination. When the EOFM runs, the log should then reflect that these files have in fact been processed:

*"EOFM initialized C Drive successfully"*