

WHAT HAPPENS WHEN THE SAME FILE IS OPENED AT TWO LOCATIONS BEING WATCHED BY PEERLOCK?

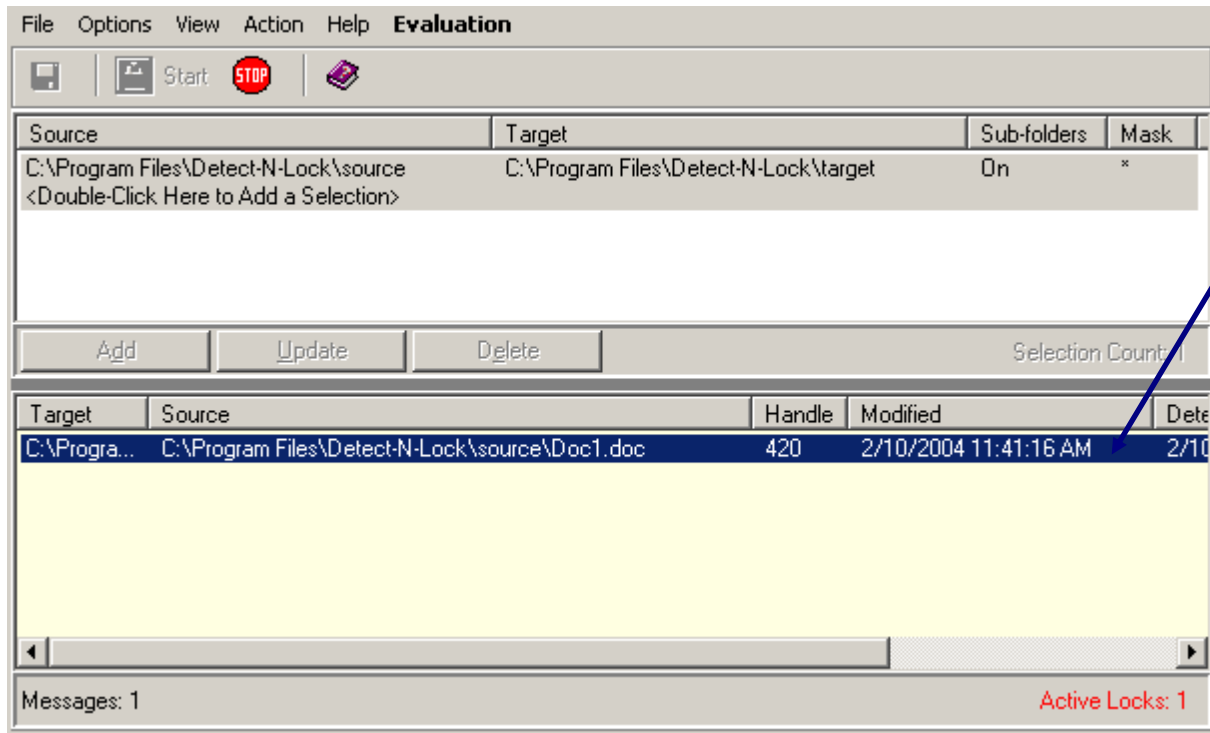
PeerLock secures a machine's user's files across a network of machines, ensuring that all copies of the files are locked while the user is working with the file. This security protects against multiple revisions occurring simultaneously on different machines.

PeerLock is designed to work with our PeerSync and Save-N-Sync products as to offer a total locking and synchronization solution

HOW IT WORKS:

When a user opens a file in a watched folder on his/her local machine, the file is immediately locked on the other machines (*refer to image 1.1*) specified in the user profiles list. Depending upon the PeerLock options specified, PeerLock can either lock files in an exclusive mode or not.

WE RECOMMEND ALL USERS EVALUATE THE PRODUCT IN THEIR SPECIFIC ENVIRONMENT AS THE PERFORMANCE IS STRICTLY BASED ON THE APPLICATIONS BEING USED TO OPEN THE WATCHED FILES.



**Locked
Files List**

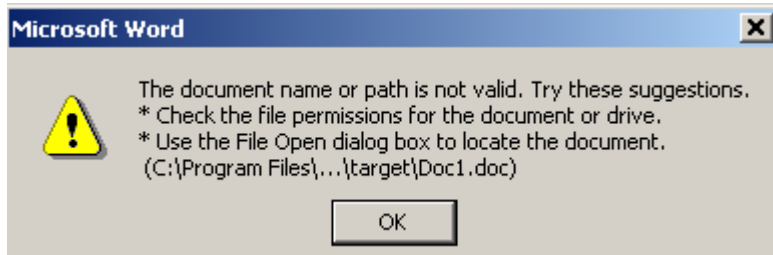
(Image 1.1)

USING EXCLUSIVE LOCK OPTION

When a user tries to open a file in a watched folder on his/her local machine an *Exclusive Lock Option*, the file is immediately locked on the other machine(s) specified in the user profiles list (Refer to image 1.1). The other users will not be able to gain access to the file on the Target machine.

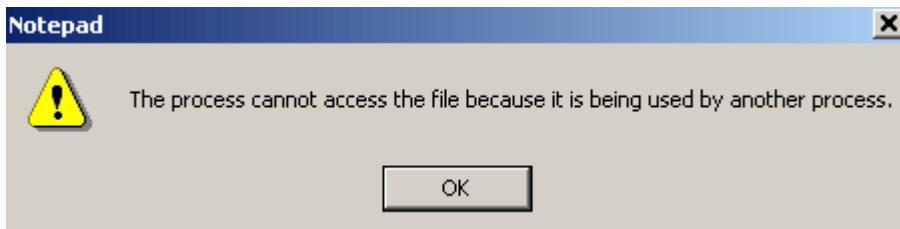
The message displayed when a user tries to open the file is specific to the application being used. Below are some examples of Word, Notepad and PowerPoint files trying to be opened on the Target Machine while in use on the Source Machine (Refer to image 1.2, 1.3 and 1.4).

Using Word



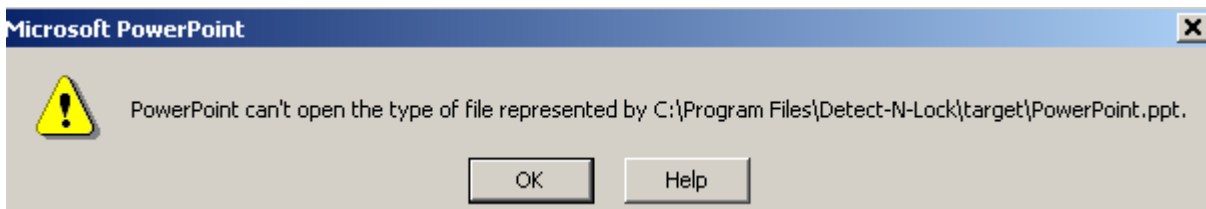
(Image 1.2)

Using Notepad



(Image 1.3)

Using PowerPoint



(Image 1.4)

When the user closes the file, the files residing on the other machines are immediately unlocked, and can now be accessed to make changes.

USING NON EXCLUSIVE LOCK OPTION

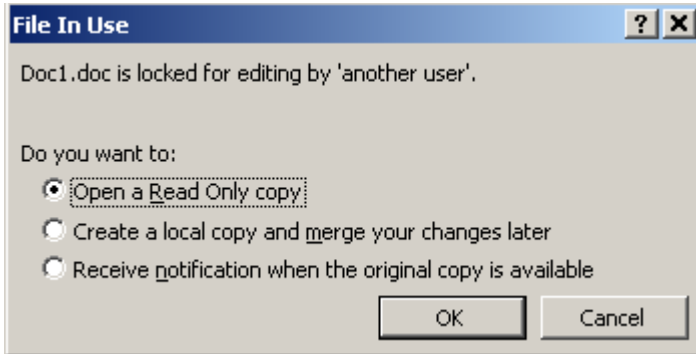
When a user tries to open a file in a watched folder on his/her local machine using a *Non Exclusive Lock Option*, the file is immediately locked (Refer to image 1.1) on the other machines specified in the user profiles list.

Depending on the application being used to access the file, the other user(s) might have options shown below when trying to open the file, or simply a non accessible message. (Refer to image 1.5, 1.6, and 1.7)

Using Microsoft Word.

Open a Read Only Copy

This option will let the user open the file in a read-only state. He/she cannot make modifications to this file; however he/she will be able to review the file.



Create a local copy and merge your changes later

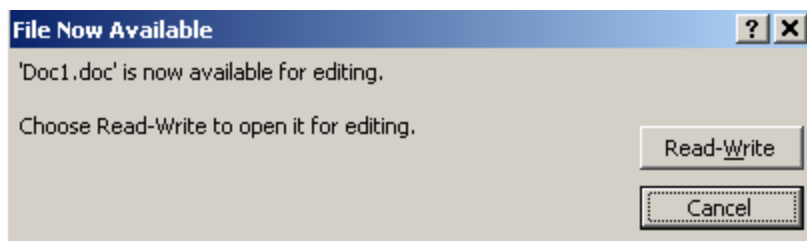
This option will let you create a copy of the file for you to modify and manually merge the changes at a later time.

Receive notification when the original copy is available

This option will let the user open the file in a read-only state. When the file becomes available the user will receive a notification.

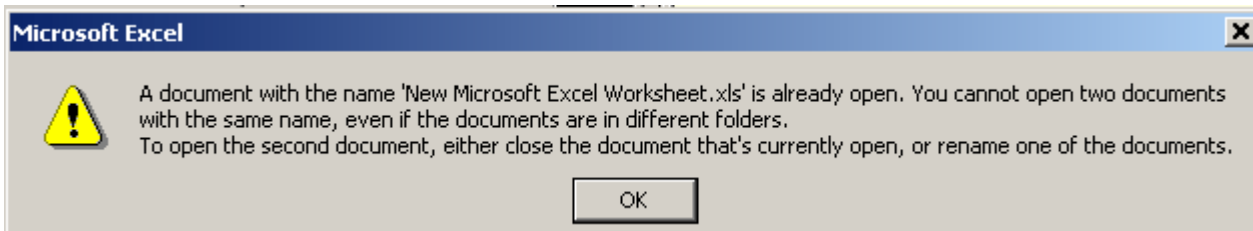
(Refer to image 1.6)

(Image 1.5)



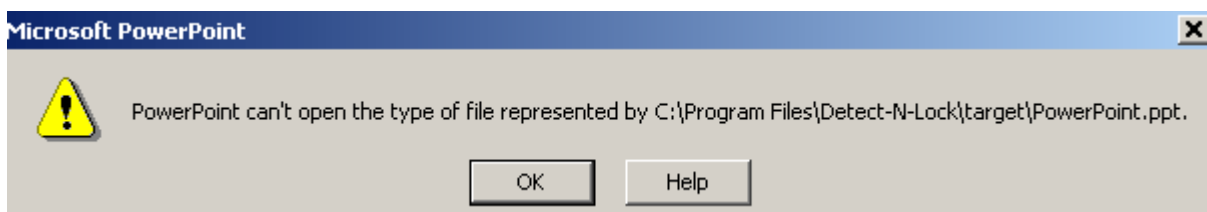
(Image 1.6)

Using Microsoft Excel



(Image 1.7)

Using PowerPoint



(Image 1.8)